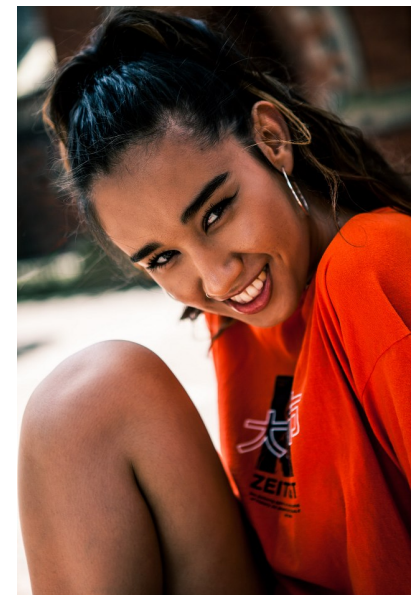
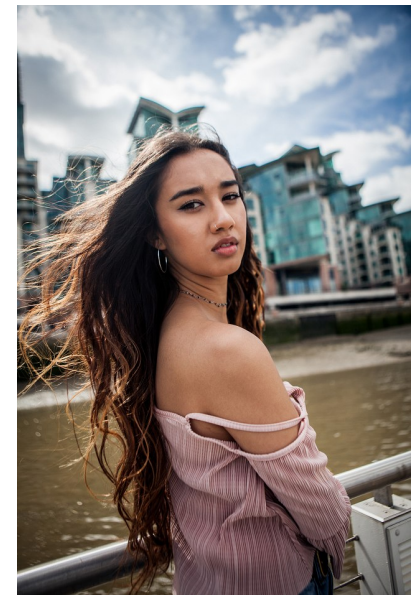




ANNIE MAGUIRE

Height 175cm/5'9" Bust 79cm/31" B Waist 65cm/25.5" Hips 93cm/36.5"
Dress 36 EU/6 US/8 UK Shoe 39 EU/8 US/6 UK Hair Brown Eyes Brown



BAME

BAME Models, Studio 1a, 1 Stapleton Hall Road, London, N4 3QE
Landline: +44 20 3488 1605