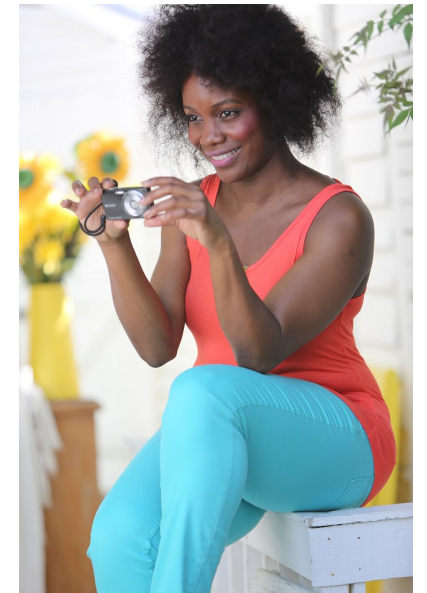
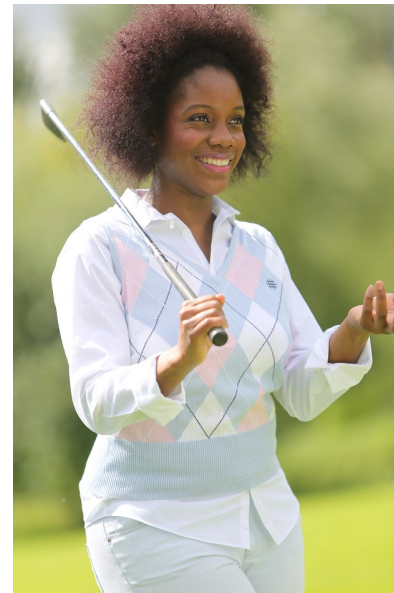
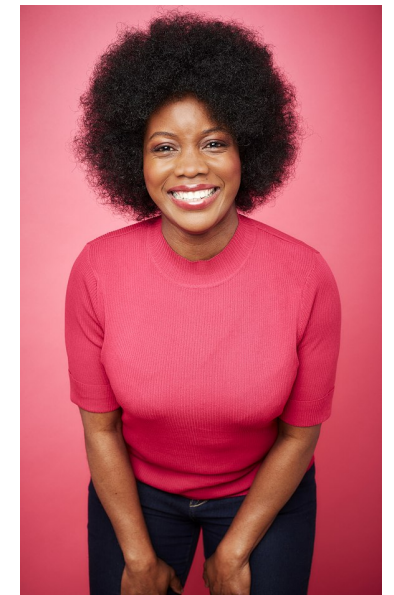




RACHEL-SOPHIA ANTHONY

Height 166cm/5'5.5" Bust 100cm/39.5" B Waist 80cm/31.5"
Hips 108cm/42.5" Dress 12 UK Shoe 7 UK Hair Black Eyes Brown



BAMEMODELS

BAME Models, Studio 1a, 1 Stapleton Hall Road, London, N4 3QE
Landline: +44 0207 190 9612